

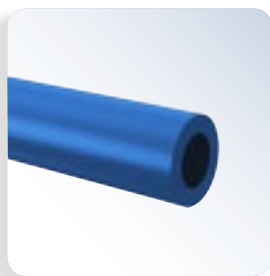
PPR INDUSTRIAL

Condução de ar comprimido



PPR INDUSTRIAL

Ar comprimido



TUBO PPR AR
COMPRIMIDO



Dimensões (mm)				
Cotas	e	DE	L	Código
20	2,8	20	3000	17005014
25	3,5	25	3000	17005030
32	4,5	32	3000	17005057
40	5,6	40	3000	17005073
50	6,9	50	3000	17005090
63	8,7	63	3000	17005111
75	10,4	75	3000	17005138
90	12,5	90	3000	17005154



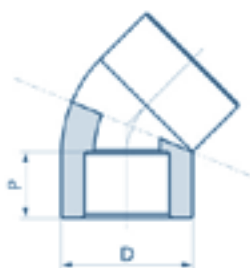
JOELHO 90° PPR



Dimensões (mm)				
Cotas	D	P	L	Código
20	30	15,25	26,6	22310801
25	35,95	16,75	30,85	22310828
32	43	18,75	37	22310836
40	55,2	21,25	43	22310844
50	66,15	24,25	51	22310852
63	84,3	28,5	61,5	22310860
75	106,5	30,75	70	22310879
90	126,5	33,75	80	22310895



JOELHO 45° PPR



Dimensões (mm)			
Cotas	D	P	Código
20	30	15	22310500
25	36	16,75	22310526
32	43	18,75	22310534
40	56	21,25	22310542
50	67,1	24,25	22310550
63	85,3	28,25	22310569
75	106,5	30,75	22310577
90	126,5	33,75	22310593



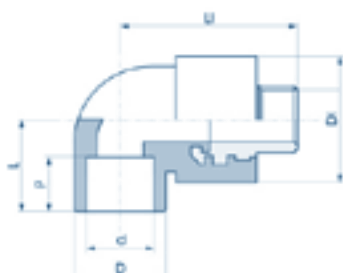
JOELHO COM ROSCA
FÊMEA PPR



Dimensões (mm)						
Cotas	D	P	L	L1	H	Código
20 x 1/2	30	15,25	45	35	16	22311000
25 x 1/2	36	16,75	53	41	15	22311026
25 x 3/4	36	16,75	53	41	16	22311034
32 x 1/2	43	18,75	65,8	44,6	16	22311069



JOELHO COM ROSCA
MACHO PPR



Dimensões (mm)								
Cotas	D	D1	d	p	L	L1	H	Código
20 x 1/2	30	37	20	15,25	45,5	48	13,2	22311204
25 x 1/2	36	44	25	16,75	53	56	15	22311220
25 x 3/4	36	44	25	16,75	53	57	16	22311239
32 x 1/2	42,95	56,5	32	18,75	74	60,6	15	22311263



CURVA 90° PPR



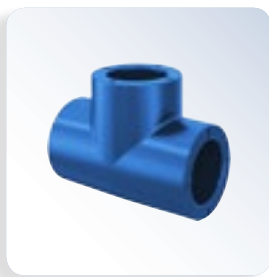
Dimensões (mm)				
Cotas	D	p	L	Código
20	30	15,25	60	22311700
25	36	16,75	70	22311727
32	43	18,75	80	22311735



CURVA DE TRANSPOSIÇÃO PPR



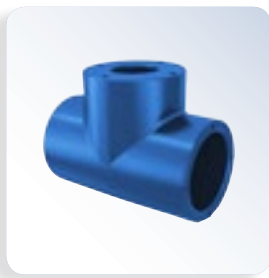
Dimensões (mm)				
Cotas	D	P	L	Código
20	20	21	360	22312006
25	25	26	360	22312022
32	32	33	360	22312030



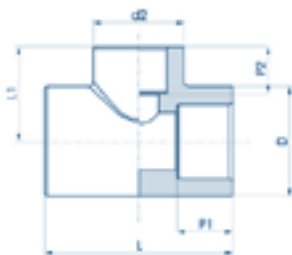
TÊ PPR



Dimensões (mm)				
Cotas	D	P	L	Código
20 x 20 x 20	30	15,25	54	22312502
25 x 25 x 25	36	16,75	62	22312529
32 x 32 x 32	42,95	18,75	74	22312537
40 x 40 x 40	55,2	21,25	86	22312545
50 x 50 x 50	66,1	24,25	102	22312553
63 x 63 x 63	84,3	28,25	128	22312561
75 x 75 x 75	106,5	30,75	140	22312570
90 x 90 x 90	126,5	33,75	161	22312596



TÊ DE REDUÇÃO CENTRAL PPR



Dimensões (mm)							
Cotas	D	d2	PL	P2	L	L1	Código
25 x 20 x 25	36	20	16,75	15,25	62	31	22313037
32 x 25 x 32	43	25	18,75	16,75	74	37	22313061
40 x 25 x 40	55,2	25	21,25	16,75	86	43	22313258
40 x 32 x 40	55,2	32	21,25	16,75	86	43	22313266
50 x 32 x 50	66,1	32	24,25	16,75	102	51	22313444
50 x 40 x 50	66,1	40	24,25	21,25	102	51	22313452
63 x 40 x 63	84,3	40	28,25	21,25	123	61,5	22313657
63 x 50 x 63	84,3	50	28,25	24,25	123	61,5	22313665
75 x 50 x 75	106,5	50	30,75	24,25	140	70	22313851
75 x 63 x 75	106,5	63	30,75	28,25	140	70	22313860
90 x 63 x 90	106,5	63	33,75	29,00	161	80,5	22314068
50 x 75 x 90	126,5	75	33,75	29,00	161	80,5	22314076



TÊ ROSCA CENTRAL FÊMEA PPR



Dimensões (mm)							
Cotas	D	D1	p	L	L1	H	Código
20 x 1/2	30	37	15,25	54	35	15	22314505
25 x 1/2	36	44	16,75	62	43	16	22314521
25 x 3/4	36	44	16,75	62	43	16,5	22314530
32 x 1/2	43	56,5	18,75	74	48,6	16	22314572

PPR INDUSTRIAL

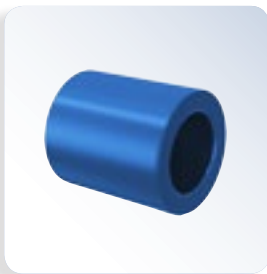
Ar comprimido



TÊ ROSCA CENTRAL MACHO PPR



Dimensões (mm)							
Cotas	D	D1	p	L	L1	H	Código
20 x 1/2	36	37	15,25	54	50	15	22314807
25 x 1/2	36	44	16,75	62	56	12,5	22314823
25 x 3/4	36	44	16,75	62	57,5	14,5	22314831
32 x 1/2	44	56,5	18,75	74	61,1	12,5	22314874



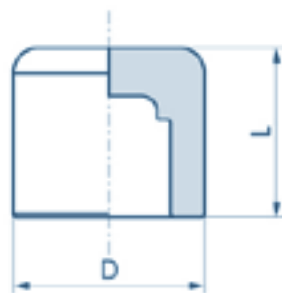
LUVA PPR



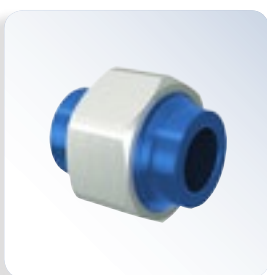
Dimensões (mm)				
Cotas	D	P	L	Código
20	30	15,25	34,5	22315005
25	36	16,75	38,2	22315021
32	43	18,75	43,5	22315030
40	55,2	21,25	47,1	22315048
50	66,2	24,25	53,2	22315056
63	84,3	28,25	61,2	22315064
75	106,5	30,75	67	22315072
90	126,5	33,75	74	22315099



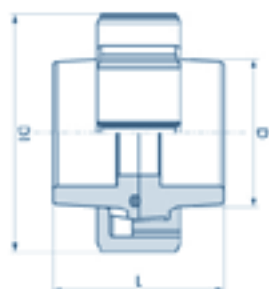
CAP PPR



Dimensões (mm)				
Cotas	D	P	L	Código
20	30	15,25	26,5	22315501
25	36	16,75	30	22315528
32	43	18,75	34	22315536
40	55,2	21,25	36,5	22315544
50	66,1	24,25	41	22315552
63	84,2	28,25	48	22315560
75	106,5	30,75	58	22315579
90	126,5	33,75	64	22315595



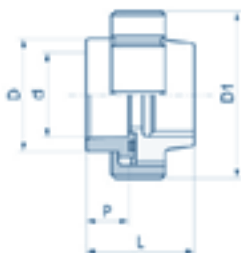
UNIÃO DUPLA PPR



Dimensões (mm)				
Cotas	D	L	D1	Código
20	30	46	44	22315706
25	36	47	54	22315722
32	44	50	70	22315730



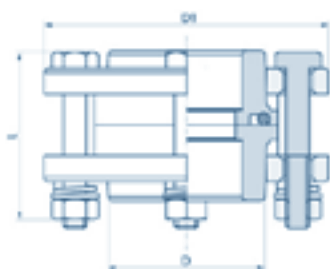
UNIÃO DUPLA
MISTA PPR



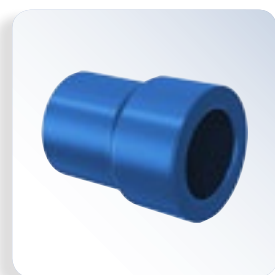
Dimensões (mm)						
Cotas	D	d	L	D1	P	Código
20 x 1/2"	47,5	20	44	98	15,25	22315803
25 x 3/4"	53,5	25	48	103,5	16,75	22315820
32 x 1"	71,5	32	51	123,5	18,75	22315870



UNIÃO DUPLA COM
PARAFUSOS PPR



Dimensões (mm)				
Cotas	D	L	D1	Código
40	55	61	98	22316044
50	66	65	103,5	22316052
63	88	68	123,5	22316060
75	107	66	155	22316079
90	122	90	180	22316095



BUCHA DE
REDUÇÃO PPR



Dimensões (mm)						
Cotas	D	d	L	D1	P	Código
25 x 20	30	20	15.25	38	15,25	22316524
32 x 20	36	20	16.25	40	15,25	22316559
32 x 25	36	25	16.75	43	16,75	22316567
40 x 25	43	25	16.75	46.5	16,75	22316729
40 x 32	43	32	18.75	46.5	18,75	22316737
50 x 32	55.2	32	18.75	54.5	18,75	22316834
50 x 40	55.2	40	21.25	54.5	21,25	22316842
63 x 40	66.15	40	21.25	64.5	21,25	22316940
63 x 50	66	50	24.25	64.5	24,25	22316958
75 x 50	75.25	50	24.25	68.5	24,25	22317059
75 x 63	84.3	63	26.25	72.5	28,25	22317067
90 x 63	80.3	63	28.25	78.5	28,25	22317261
90 x 75	106.5	75	30.75	82	30,75	22317270



CONECTOR PPR

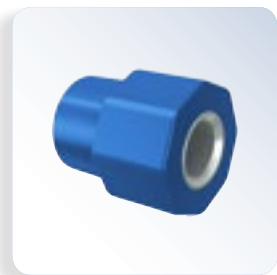


Dimensões (mm)						
Cotas	D	D1	P	L	H	Código
20 x 1/2	30	44	15,25	64	13.2	22317504
25 x 1/2	35.7	44	16,75	64	13.2	22317520
25 x 3/4	35.7	44	16,75	65.5	14.5	22317539
32 x 1	43	57.8	18,75	75	27.5	22317571

Dimensões (mm)						
Cotas	D	D1	P	L	H	Código
40 x 1 1/4	55.2	70	21,25	91.5	14	22317636
50 x 1 1/2	66.2	81.5	24,25	94.5	15.5	22317695
63 x 2	85	91	28,25	101.5	15.5	22317750
75 x 2 1/2	88	115	30,75	108	20	22317865
90 x 3	105	134	33,75	111	20	22317970

PPR INDUSTRIAL

Ar comprimido

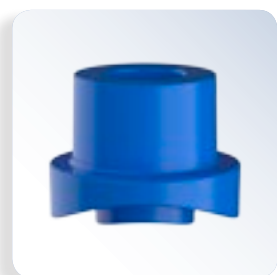


LUVA DE TRANSIÇÃO PPR

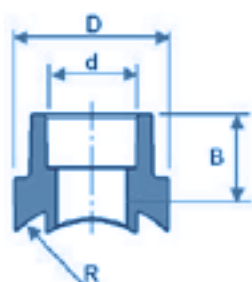


Dimensões (mm)						
Cotas	D	D1	P	L	H	Código
20 x 1/2	30	44	15,25	51	16	22318004
25 x 1/2	35,7	44	16,75	51	16	22318020
25 x 3/4	37,5	44	16,75	51	18	223180398
32 x 1	43	57,8	20	47,5	22,5	22318071

Dimensões (mm)						
Cotas	D	D1	P	L	H	Código
40 x 1 1/4	55	70	21,25	68,5	29	22318136
50 x 1 1/2	66	81,5	24,25	71,5	29	22318241
63 x 2	84	91	28,25	76,5	34	22318357
75 x 2 1/2	100	115	30,75	64	25	22318462
90 x 3	120	134	33,75	67	25	22318578



SELIM DE DERIVAÇÃO



Dimensões (mm)					
Bitola	B	D	R	D	Código
63x20		47,5	32	20	22311506
63x25	28	47,5	32	25	22311514
63x32	30	54	32	32	22311522
75x20	28	47,5	38	20	22311530
75x25	28	47,5	38	25	22311549
75x32	28	54	32	32	22311557



TESOURA P/ TUBO PPR

Código
37.42.710.1



TERMOFUSORA T-63

Código
37.42.700.4*

*Para tubos até DN 63 mm.



TERMOFUSORA T-110

Código

37.42.826.4*

*Para tubos até DN 110 mm.



BOCAL DE TERMOFUSÃO

Bítola	Código
20	37.42.702.0*
25	37.42.703.9*
32	37.42.704.7*
40	37.42.705.5*
50	37.42.706.3*
63	37.42.707.1*
75	37.42.708.0*

*Disponível sob consulta de prazo.