

THERMOPLASTIC FLANGES

MOLDED & FABRICATED

TECHNICAL INFORMATION
WEIGHTS & DIMENSIONS

Schedule 80 PVC/CPVC Technical Information PVC/CPVC Pipe Flange Dimensions & Information

Bolt Kit Selection Guide

**Bolt Hardware Kits Available
For Connection of 2-Spears® Flanges
Includes Bolts, Nuts & Flat Washers for Specified Flange Size**

- Order Gaskets & Bolt Kits Separately
- Pre-coated, Anti-seize Lubricated Bolts
 - Available in Zinc Coated Steel, Type 316 Stainless Steel or Type 304 Stainless Steel



	Bolts* Per Kit	Diameter (in.) Flange Size	Length (in.)	Kit Part Number		
				Zinc	316 SS	304 SS
4	4	1/2 - 3/4	2	HK-005	HK1-005	HK2-005
	4	3/4 - 1	2-1/4	HK-010	HK1-010	HK2-010
	4	1 1/2 - 13	2-1/2	HK-015	HK1-015	HK2-015
	4	5/8 - 11	3	HK-020	HK1-020	HK2-020
10 & 12	4	5/8 - 11	3-1/4	HK-025	HK1-025	HK2-025
	4	5/8 - 11	3-1/2	HK-030	HK1-030	HK2-030
	8	5/8 - 11	3-1/2	HK-040	HK1-040	HK2-040
	8	3/4 - 10	4	HK-060	HK1-060	HK2-060
	8	3/4 - 10	4-1/2	HK-080	HK1-080	HK2-080
	12	7/8 - 9	5	HK-120	HK1-120	HK2-120

* Each Bolt Includes Nut & Two (2) Flat Washers

Bolt Torque

Recommended Bolt Torque is shown in **Table 1**. Threads should be clean and well lubricated. Actual field conditions may require variations in these recommendations. **CAUTION: UNNECESSARY OVER TORQUING WILL DAMAGE THE FLANGE.**

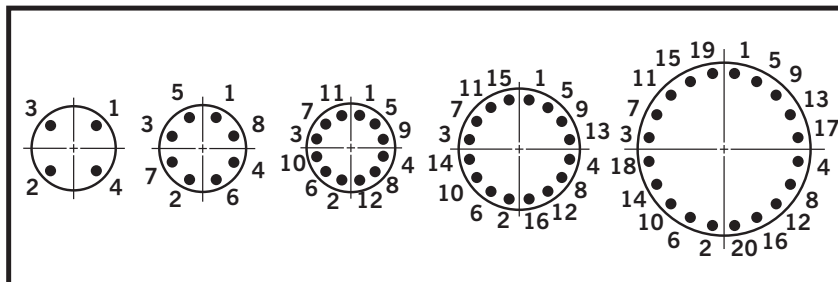
Table 1

Flange Size (in.)	Recommended Torque (ft. lbs.)
1/2 - 1-1/2	12
2 - 4	25
5	30
6 - 8	40
10	64
12	95
14 - 24	110

Torque Sequence

Bolt Torque sequence is shown Below in **Table 2**.

Table 2



Gaskets

Full faced, 1/8" thick elastomer gaskets with a Shore "A" Durometer of approximately 70 is recommended.

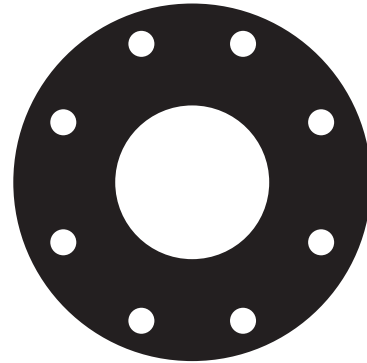
Gasket Selection Guide

Following Gasket Numbers Available from Spears®

Order Gaskets & Bolt Kits Separately

- 1/8" Full-Face design with ANSI Class 150 Bolt Patterns
- Pressure rated to 150 psi @ 73°F
- Available in Buna-N, EPDM, or FKM

Flange Size	Bolts Per Kit	Gasket Part Number		
		Buna-N	EPDM	FKM
1/2	4	GK1-005	GK2-005	GK3-005
3/4	4	GK1-007	GK2-007	GK3-007
1	4	GK1-010	GK2-010	GK3-010
1-1/4	4	GK1-012	GK2-012	GK3-012
1-1/2	4	GK1-015	GK2-015	GK3-015
2	4	GK1-020	GK2-020	GK3-020
2-1/2	4	GK1-025	GK2-025	GK3-025
3	4	GK1-030	GK2-030	GK3-030
4	8	GK1-040	GK2-040	GK3-040
5	8	GK1-050	GK2-050	GK3-050
6	8	GK1-060	GK2-060	GK3-060
8	8	GK1-080	GK2-080	GK3-080
10	12	GK1-100	GK2-100	GK3-100
12	12	GK1-120	GK2-120	GK3-120



Flange Make-up

Once a flange is joined to pipe, the method for joining two flanges is as follows:

1. Piping runs joined to the flanges must be installed in a straight line position to the flange to avoid stress at the flange due to misalignment. Piping must also be secured and supported to prevent lateral movement which can create stress and damage the flange.
2. With gasket in place, align the bolt holes of the mating flanges by rotating the ring into position.
3. Insert all bolts, washers (two standard flat washers per bolt), and nuts.
4. Make sure the faces of the mating surfaces are flush against gasket prior to bolting down the flanges.
5. Tighten the nuts by hand until they are snug. Establish uniform pressure over the flange face by tightening the bolts in 5 ft.-lbs. increments according to the sequence shown in **Table 2** following a 180° opposing sequence.
6. Care must be taken to avoid "bending" the flange when joining a Spears® flange to a "raised face" flange, or a wafer-style valve. Do not use bolts to bring together improperly mated flanges.

Configuration Terminology

Multi-Bolt Pattern Ring — Bolt hole drilling accepts ANSI and Metric Flanges

Socket — Slip socket connection for solvent cement welding

Spigot — Pipe O.D. connection for solvent welding

Fipt — Female Iron Pipe Thread

SR Fipt — Spears® patented Special Reinforced (SR) plastic thread

IPS — Iron Pipe Size

PIP — Plastic Irrigation Pipe

Technical Information

Application

Molded CLASS 150 Flange fittings are coupling devices designed for joining IPS (Iron Pipe Size) plastic piping systems, where frequent disassembly may be required, and can be used as a transitional fitting for joining plastic to metal piping systems. Suitability of application is at the discretion of the user.

Pressure Rating

150 psi, water at 73°F.

Flange Types

One Piece — Available in socket configuration, sizes 1/2" through 8"; threaded and SR threaded (Special Reinforced) configuration sizes 1/2" through 4".

Van Stone Style — Two-piece design with rotating flange ring, available in socket configurations, sizes 1/2" through 16"; threaded configurations, sizes 1/2" through 4" and spigot configurations, sizes 1/2" through 12".

Blind — Closed ring design for capping off a mating flange, flanged fitting or flanged valve, available in sizes 1/2" through 12".

Materials

All injection molded flanges are produced from PVC/CPVC materials approved for potable water use by the National Sanitation Foundation (NSF®).

Glass-filled PVC/CPVC materials may be used in certain Van Stone Style flange rings and large diameter Blind flanges where additional reinforcement is deemed necessary.

Conformance Standards

Socket & Spigot — ASTM D 2467 (PVC), ASTM F 439 (CPVC).

Threads — ASTM F 1498.

Bolt Hole Pattern — ANSI B16.5; ASTM D 4024.

Material — ASTM D 1784.

Weights & Dimensions

Specified minimum bolt lengths are based on the use of two Spears® Flanges, two standard flat washers, standard nut and 1/8" thick elastomer full face gasket. Mating with other brands or accessories may require variation. Bolts and gaskets are not supplied with flanges.

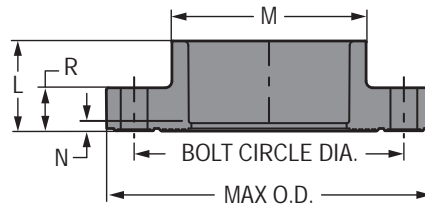
Dimension references:

- L** = Overall length of hub, $\pm 1/16$ inch.
- M** = Outside diameter of socket hub, $\pm 1/16$ inch.
- N** = (Laying Length) socket/spigot bottom to seal-ring face of flange, $\pm 1/16$ inch. **R**
- = Height (thickness) of flange ring, $\pm 1/16$ inch.
- Max O.D.** = Outside diameter of ring, $\pm 1/16$ inch.
- Bolt Circle Diameter** = ANSI B 16.5 Standard; ASTM D 4024, $\pm 1/16$ inch.

Schedule 80 PVC/CPVC Technical Information
PVC/CPVC Pipe Flange Dimensions & Information

Flange One Piece

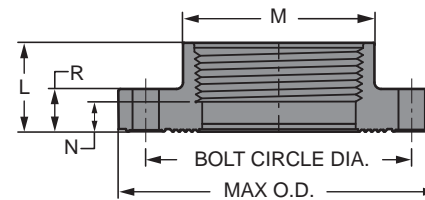
Socket



Part Number	Size	L	M	N	R	Bolt Circle Dia.	No. of Bolt Holes	Bolt Size	Min. Bolt Length	Max O.D.	Approx. Wt. (Lbs.)
851-005C	1/2	1-1/16	1-9/32	1/8	9/16	2-3/8	4	1/2	2	3-1/2	.24
851-007C	3/4	1-3/16	1-1/2	1/8	5/8	2-3/4	4	1/2	2	3-7/8	.31
851-010C	1	1-5/16	1-13/16	3/16	3/4	3-1/8	4	1/2	2-1/4	4-1/4	.47
851-012C	1-1/4	1-3/8	2-3/16	3/32	21/32	3-1/2	4	1/2	2-1/4	4-5/8	.45
851-015C	1-1/2	1-19/32	2-1/2	3/16	23/32	3-7/8	4	1/2	2-1/2	5-1/16	.61
851-020C	2	1-27/32	3	5/16	27/32	4-3/4	4	5/8	3	6	.95
851-025C	2-1/2	2-1/4	3-1/2	1/2	1	5-1/2	4	5/8	3-1/4	7	1.67
851-030C	3	2-5/16	4-9/32	3/8	1-1/16	6	4	5/8	3-1/4	7-1/2	1.81
851-040C	4	2-7/16	5-7/32	3/16	1-5/32	7-1/2	8	5/8	3-1/2	9-1/16	2.78
851-050C	5	3-1/4	6-3/8	1/4	1	8-1/2	8	3/4	3-3/4	10-1/8	3.17
851-060C	6	3-1/4	7-9/16	1/4	1-3/8	9-1/2	8	3/4	4	11	4.34
851-080C	8	4-17/32	9-3/4	1/2	1-7/16	11-11/16	8	3/4	4-1/2	13-5/8	8.02
851-100CF	10	9-7/8	11-15/16	4-5/8	1-3/8	14-1/4	12	7/8	4	16	19.27
851-120CF	12	10-11/16	14-1/8	4-7/16	1-3/8	17	12	7/8	5	19	30.67

Flange One Piece

Fipt



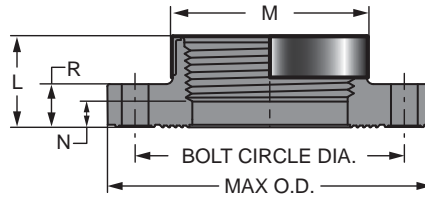
Part Number	Size	L	M	N	R	Bolt Circle Dia.	No. of Bolt Holes	Bolt Size	Min. Bolt Length	Max O.D.	Approx. Wt. (Lbs.)
852-005C	1/2	1-1/16	1-5/16	9/32	9/16	2-3/8	4	1/2	2	3-1/2	.22
852-007C	3/4	1-3/16	1-17/32	15/32	5/8	2-3/4	4	1/2	2	3-7/8	.32
852-010C	1	1-5/16	1-13/16	7/16	3/4	3-1/8	4	1/2	2-1/4	4-1/4	.48
852-012C	1-1/4	1-3/8	2-7/32	17/32	23/32	3-1/2	4	1/2	2-1/4	4-5/8	.46
852-015C	1-1/2	1-11/16	2-1/2	19/32	23/32	3-27/32	4	1/2	2-1/2	5-1/16	.64
852-020C	2	1-27/32	3	7/8	7/8	4-3/4	4	5/8	3	6	1.00
852-025C	2-1/2	2-1/4	3-1/2	15/16	1	5-1/2	4	5/8	3-1/4	7	1.41
852-030C	3	2-5/16	4-9/32	29/32	1-1/16	6	4	5/8	3-1/4	7-1/2	1.91
852-040C	4	2-1/16	5-7/16	5/16	1-1/4	7-1/2	8	5/8	3-1/2	9	2.86
852-050CF	5	6-5/8	6-1/8	5-1/4	1-5/16	8-1/2	8	3/4	3-3/4	10-1/8	5.51
852-060CF	6	6-15/16	7-1/4	5-1/2	1-5/16	9-1/2	8	3/4	4	11	7.69
852-080CF	8	8-9/16	9-7/16	6-15/16	1-7/16	11-3/4	8	3/4	4-1/2	13-1/2	13.92
852-100CF	10	7-3/8	11-3/4	5-1/2	1-3/8	14-1/4	12	7/8	5	16	20.72
852-120CF	12	7	13-15/16	5	1-3/8	17	12	7/8	4	19	22.59

Schedule 80 PVC/CPVC Technical Information
PVC/CPVC Pipe Flange Dimensions & Information



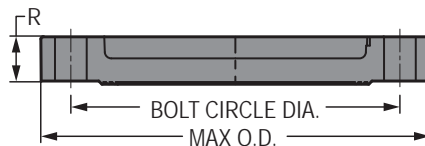
**Special Reinforced
Flange One Piece**

SR Fipt



Part Number	Size	L	M	N	R	Bolt Circle Dia.	No. of Bolt Holes	Bolt Size	Min. Bolt Length	Max O.D.	Approx. Wt. (Lbs.)
852-005CSR	1/2	1-3/32	1-7/32	11/32	9/16	2-3/8	4	1/2	2	3-1/2	.22
852-007CSR	3/4	1-3/16	1-3/8	7/16	5/8	2-3/4	4	1/2	2	3-7/8	.30
852-010CSR	1	1-7/16	1-23/32	17/32	21/32	3-1/8	4	1/2	2-1/4	4-1/4	.39
852-012CSR	1-1/4	1-9/16	2-1/16	19/32	21/32	3-1/2	4	1/2	2-1/4	4-5/8	.52
852-015CSR	1-1/2	1-3/4	2-7/16	3/4	3/4	3-7/8	4	1/2	2-1/2	5	.67
852-020CSR	2	1-13/16	3-1/32	13/16	13/16	4-3/4	4	5/8	3	5-31/32	1.04
852-025CSR	2-1/2	2-1/8	3-19/32	3/8	1	5-1/2	4	5/8	3-1/4	7	1.69
852-030CSR	3	2-5/16	4-9/32	27/32	1-1/16	6	4	5/8	3-1/4	7-1/2	1.97
852-040CSR	4	2-1/2	5-1/4	1	1-5/32	7-1/2	8	5/8	3-1/2	9	2.89

BLIND FLANGE

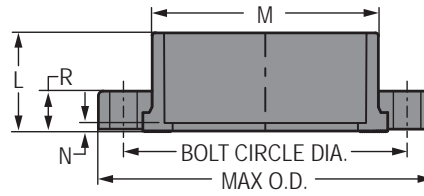


Part Number	Size	R	Bolt Circle Dia.	No. of Bolt Holes	Bolt Size	Min. Bolt Length	Max. O.D.	Approx. Wt. (Lbs.)
853-005C	1/2	17/32	2-3/8	4	1/2	2	3-17/32	.21
853-007C	3/4	5/8	2-3/4	4	1/2	2	3-7/8	.27
853-010C	1	3/4	3-1/8	4	1/2	2-1/4	4-1/4	.47
853-012C	1-1/4	23/32	3-1/2	4	1/2	2-1/4	4-5/8	.40
853-015C	1-1/2	23/32	3-27/32	4	1/2	2-1/2	5-1/16	.52
853-020C	2	27/32	4-3/4	4	5/8	3	5-31/32	.88
853-025C	2-1/2	1	5-1/2	4	5/8	3-1/4	7	1.63
853-030C	3	1-1/16	6	4	5/8	3-1/4	7-1/2	1.69
853-040C	4	1-5/32	7-1/2	8	5/8	3-1/2	9-1/16	2.98
853-060C	6	1-3/8	9-1/2	8	3/4	4	11	4.45
853-080C	8	1-7/16	11-3/4	8	3/4	4-1/2	13-1/2	7.20
853-100C	10	1-11/16	14-1/4	12	7/8	5	16	11.80
853-120C	12	1-11/16	17	12	7/8	5	19	17.20

Schedule 80 PVC/CPVC Technical Information
PVC/CPVC Pipe Flange Dimensions & Information

Flange Van Stone Style

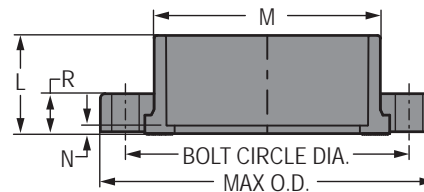
(Two Piece)
 Socket



Part Number	Size	L	M	N	R	Bolt Circle Dia.	No. of Bolt Holes	Bolt Size	Min. Bolt Length	Max O.D.	Approx. Wt. (Lbs.)
854-005C	1/2	1-1/32	1-7/32	5/32	17/32	2-3/8	4	1/2	2	3-1/2	.20
854-007C	3/4	1-1/8	1-7/16	5/32	9/16	2-3/4	4	1/2	2	3-7/8	.27
854-010C	1	1-9/32	1-3/4	5/32	5/8	3-1/8	4	1/2	2-1/4	4-1/4	.37
854-012C	1-1/4	1-13/32	2-5/32	5/32	11/16	3-1/2	4	1/2	2-1/4	4-5/8	.45
854-015C	1-1/2	1-17/32	2-7/16	3/16	3/4	3-7/8	4	1/2	2-1/2	5	.60
854-020C	2	1-11/16	2-15/16	3/16	13/16	4-3/4	4	5/8	3	6	.91
854-025C	2-1/2	2	3-1/2	3/16	31/32	5-1/2	4	5/8	3-1/4	7	1.40
854-030C	3	2-1/8	4-1/4	1/4	1-1/16	6	4	5/8	3-1/4	7-1/2	1.70
854-040C	4	2-1/2	5-1/4	1/4	1-1/8	7-1/2	8	5/8	3-1/2	9	2.84
854-050C	5	3	6-1/4	3/8	1-1/8	8-1/2	8	3/4	3-3/4	10-1/8	3.60
854-060C	6	3-3/8	7-9/16	7/16	1-9/32	9-1/2	8	3/4	4	11	4.67
854-080C	8	4-3/8	9-5/16	9/32	1-3/8	11-3/4	8	3/4	4-1/2	13-1/2	7.06
854-100C	10	5-11/16	11-3/4	21/32	1-5/8	14-1/4	12	7/8	5	16	11.76
854-120C	12	7-1/4	13-3/4	5/8	1-1/2	17	12	7/8	5	19	18.50
854-140C	14	7-1/2	15-1/2	1/2	2	18-3/4	12	1	5-1/2	21	28.42
854-160C	16	8-3/4	17-3/4	3/4	2-3/8	21-1/4	16	1	6-1/2	23-1/2	24.81
854-180C	18	9	20	1/4	2-3/8	22-3/4	16	1-1/8	6-1/2	25	46.48

Flange Van Stone Style

with Plastic Solid Ring
 (Two Piece)
 Socket



Part Number	Size	L	M	N	R	Bolt Circle Dia.	No. of Bolt Holes	Bolt Size	Min. Bolt Length	Max O.D.	Approx. Wt. (Lbs.)
S854-030C	3	2-1/8	4-1/4	1/4	1-1/16	6	4	5/8	3-1/4	7-1/2	1.70
S854-040C	4	2-1/2	5-1/4	1/4	1-1/8	7-1/2	8	5/8	1/2	9	2.84
S854-060C	6	3-3/8	7-9/16	7/16	1-9/32	9-1/2	8	3/4	4	11	4.67
S854-080C	8	4-3/8	9-5/16	3/8	1-3/8	11-3/4	8	3/4	4-1/2	13-1/2	7.06
S854-100C	10	5-11/16	11-3/4	11/16	1-5/8	14-1/4	12	7/8	5	16	11.76
S854-120C	12	7-1/4	13-3/4	5/8	1-3/4	17	12	7/8	5	19	19.13

Schedule 80 PVC/CPVC Technical Information
PVC/CPVC Pipe Flange Dimensions & Information

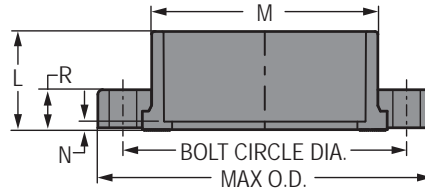


Flange Van Stone Style

with Multi-Bolt Pattern Ring

(Two Piece)

Socket

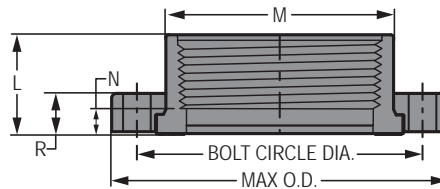


Part Number	Size	L	M	N	R	Bolt Circle Dia.		No. of Bolt Holes	Bolt Size	Max O.D.	Approx. Wt. (Lbs.)
						Min	Max				
M854-020C	2	1-11/16	2-15/16	3/16	13/16	4-1/2	4-15/16	4	5/8	6	.93
M854-060C	6	3-3/8	7-9/16	7/16	1-9/32	9-7/32	9-1/2	8	3/4	11	5.09
M854-080C	8	4-3/8	9-5/16	3/8	1-3/8	11-1/2	11-3/4	8	3/4	13-1/2	7.21

Flange Van Stone Style

(Two Piece)

Flt



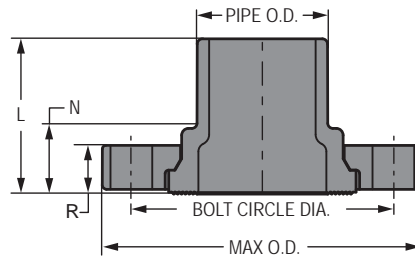
Part Number	Size	L	M	N	R	Bolt Circle Dia.	No. of Bolt Holes	Bolt Size	Min. Bolt Length	Max. O.D.	Approx. Wt. (Lbs.)
855-007C	3/4	1-5/32	1-3/8	13/32	9/16	2-3/4	4	1/2	2	3-7/8	.28
855-010C	1	1-1/4	1-3/4	5/16	5/8	3-1/8	4	1/2	2-1/4	4-1/4	.39
855-012C	1-1/4	1-3/8	2-1/8	13/32	11/16	3-1/2	4	1/2	2-1/4	4-5/8	.47
855-015C	1-1/2	1-15/32	2-7/16	13/32	3/4	3-7/8	4	1/2	2-1/2	5	.61
855-020C	2	1-9/16	2-31/32	1/2	13/16	4-3/4	4	5/8	3	6	.94
855-025C	2-1/2	2	3-9/16	7/16	1	5-1/2	4	5/8	3-1/4	7	1.50
855-030C	3	2-1/8	4-1/4	1/2	1-1/16	6	4	5/8	3-1/4	7-1/2	1.79
855-040C	4	2-1/16	5-1/4	3/8	1-1/4	7-1/2	8	5/8	3-1/2	9	2.78
855-060CF	6	6-3/8	7-3/16	4-15/16	1-1/4	9-1/2	8	3/4	4	11	7.69
855-080CF	8	8-1/8	9-5/16	6-7/16	1-1/2	11-3/4	8	3/4	4-1/2	13-1/2	13.92
855-100CF	10	10-3/8	11-9/16	8-9/16	1-11/16	14-1/4	12	7/8	5	16	20.72
855-120CF	12	11-13/16	13-3/4	9-3/4	1-5/8	17	12	7/8	5	19	34.00

Schedule 80 PVC/CPVC Technical Information
PVC/CPVC Pipe Flange Dimensions & Information

Flange Van Stone Style

(Two Piece)

Spigot



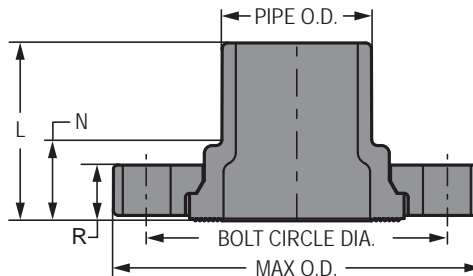
Part Number	Size	L	N	R	Bolt Circle Dia.	No. of Bolt Holes	Bolt Size	Min. Bolt Length	Max. O.D.	Approx. Wt. (Lbs.)
856-005C	1/2	1-3/4	29/32	17/32	2-3/8	4	1/2	2	3-1/2	.21
856-007C	3/4	1-15/16	31/32	9/16	2-3/4	4	1/2	2	3-7/8	.30
856-010C	1	2-3/16	1-1/32	5/8	3-1/8	4	1/2	2-1/4	4-1/4	.41
856-012C	1-1/4	2-11/32	1-3/32	11/16	3-1/2	4	1/2	2-1/4	4-5/8	.50
856-015C	1-1/2	2-5/8	1-9/32	3/4	3-7/8	4	1/2	2-1/2	5	.65
856-020C	2	2-7/8	1-11/32	13/16	4-3/4	4	5/8	3	6	1.00
856-025C	2-1/2	3-1/16	1-9/32	1	5-1/2	4	5/8	3-1/4	7	1.54
856-030C	3	3-3/8	1-7/16	1-1/16	6	4	5/8	3-1/4	7-1/2	1.88
856-040C	4	3-7/8	1-5/8	1-1/4	7-1/2	8	5/8	3-1/2	9	3.12
856-060C	6	4-3/4	1-25/32	1-9/32	9-1/2	8	3/4	4	11	4.79
856-080C	8	5-7/8	1-15/16	1-3/8	11-3/4	8	3/4	4-1/2	13-1/2	8.17
856-100C	10	8	2-1/4	1-5/8	14-1/4	12	7/8	5	16	16.09
856-120C	12	8-1/2	2-3/16	1-5/8	17	12	7/8	5	19	22.70

Flange Van Stone Style

with Multi-Bolt Pattern Ring

(Two Piece)

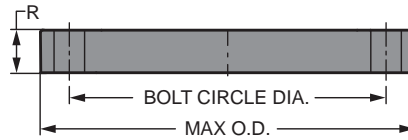
Spigot



Part Number	Size	L	N	R	Bolt Circle Dia.		No. of Bolt Holes	Bolt Size	Max. O.D.	Approx. Wt. (Lbs.)
					Min.	Max.				
M856-020C	2	2-7/8	1-11/32	13/16	4-1/2	4-15/16	4	5/8	6	1.00
M856-060C	6	4-3/4	1-25/32	1-9/32	9-7/32	9-1/2	8	3/4	11	5.21
M856-080C	8	5-7/8	1-15/16	1-3/8	11-1/2	11-3/4	8	3/4	13-1/2	8.32

Schedule 80 PVC/CPVC Technical Information
PVC/CPVC Pipe Flange Dimensions & Information

Blind Flange

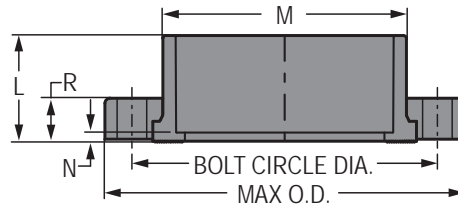


Part Number	Size	R	Bolt Circle Dia.	No. of Bolt Holes	Bolt Size	Min. Bolt Length	Max. O.D.	Approx. Wt. (Lbs.)
853-050CF	5	1	8-1/2	8	3/4	4-1/8	10-1/16	3.90
853-140CF	14	1-1/2	18-3/4	12	1	4-1/8	21	28.39
853-160CF	16	1-1/2	21-1/4	16	1	4-1/8	23-1/2	37.21
853-180CF	18	1-1/2	22-3/4	16	1-1/8	4-1/8	25	43.47
853-200CF	20	1-1/2	25	20	1-1/8	4-1/8	27-1/2	52.43
853-240CF	24	1-1/2	29-1/2	20	1-1/4	5-1/2	32	68.15

Flange Van Stone Style Class 300

(with Plastic Ring)

Socket



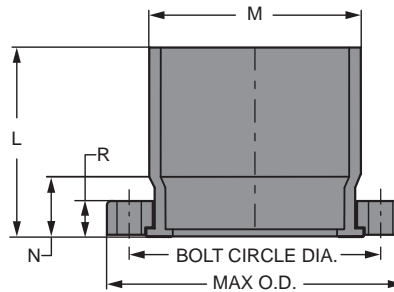
Part Number	Size	L	M	N	R	Bolt Circle Dia.	No. of Bolt Holes	Bolt Size	Min. Bolt Length	Max O.D.
854-005CL300C	1/2	1	1-3/16	3/16	1/2	2-5/8	4	1/2	2	3-3/4
854-007CL300C	3/4	1-1/8	1-3/8	3/16	1	3-1/4	4	5/8	3-1/2	4-5/8
854-010CL300C	1	1-1/4	1-3/4	3/16	1	3-1/2	4	5/8	3-1/2	4-7/8
854-012CL300C	1-1/4	1-3/8	2-1/8	1/8	1	3-7/8	4	5/8	3-1/2	5-1/4
854-015CL300C	1-1/2	1-1/2	2-7/16	3/16	1	4-1/2	4	5/8	3-1/2	6-1/8
854-020CL300C	2	1-11/16	2-15/16	3/16	1	5	8	5/8	3-1/2	6-1/2
854-025CL300C	2-1/2	2	3-9/16	1/4	1	5-7/8	8	3/4	3-1/2	7-1/2
854-030CL300C	3	2-1/8	4-1/4	1/4	1	6-5/8	8	3/4	3-1/2	8-1/4
854-040CL300C	4	2-1/2	5-1/4	1/4	1-1/2	7-7/8	8	3/4	4-1/2	10
854-060CL300C	6	3-7/16	7-9/16	3/8	1-1/2	10-5/8	12	3/4	4-1/2	12-1/2
854-080CL300C	8	4-3/8	9-3/8	5/16	1-1/2	13	12	7/8	4-1/2	15
854-100CL300C	10	5-11/16	11-3/4	5/8	1-1/2	15-1/4	16	1	4-1/2	17-1/2
854-120CL300C	12	7-5/16	13-13/16	9/16	1-1/2	17-3/4	16	1-1/8	4-1/2	20-1/2
854-140CL300C	14	7-9/16	15-9/16	9/16	2	20-1/4	20	1-1/8	5-1/2	23
854-160CL300C	16	8-9/16	17-3/4	9/16	2	22-1/2	20	1-1/4	6	25-1/2

Schedule 80 PVC/CPVC Technical Information
PVC/CPVC Pipe Flange Dimensions & Information

Flange Van Stone Style IPS

(with Plastic Ring)

Socket

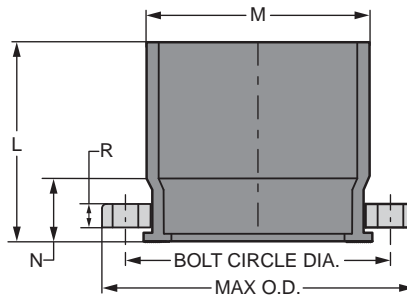


Part Number	Size	L	M	N	R	Bolt Circle Dia.	No. of Bolt Holes	Bolt Size	Min. Bolt Length	Max O.D.	Approx. Wt. (Lbs.)
854-180CFP	18	15	19-1/8	6	1-1/2	22-3/4	16	1-1/8	4-1/8	25	39.00
854-200CFP	20	16	21-3/16	6	1-1/2	25	20	1-1/8	5-1/2	27-1/2	60.20
854-240CFP	24	19	25-3/8	7	1-1/2	29-1/2	20	1-1/4	5-1/2	32	91.30

Flange Van Stone Style IPS

(with Steel Ring)

Socket



Part Number	Size	L	M	N	R	Bolt Circle Dia.	No. of Bolt Holes	Bolt Size	Min. Bolt Length	Max O.D.	Approx. Wt. (Lbs.)
854-180CFS	18	14	19-1/8	5	1/2	22-3/4	16	1-1/8	3	25	58.88
854-200CFS	20	15	21-3/16	5	1/2	25	20	1-1/8	3	27-9/16	69.46
854-240CFS	24	18	25-3/8	6	1/2	29-1/2	20	1-1/4	3	32	96.59